



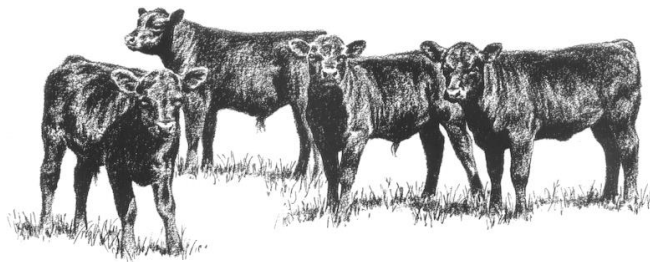
**BENTHAM
AUCTION
MART**

Tuesday 15th October 2019

10.30am 40 Feeding & Cast Cows

Followed by

**11am Annual 1st Show & Sale of
206 SUCKLED CALVES**



Followed by

303 Farmers Stirks

Please bring this catalogue to the sale

Telephone: Sales Days: 015242 61246 | Other Days: 015242 61444 | Fax No.: 015242 63857

Email: info@benthamauction.co.uk | Website: www.benthamauction.co.uk

All correspondence to Auctioneers & Secretaries:
Richard Turner & Son, Royal Oak Chambers, Main Street, High Bentham, LA2 7HF

Reg. No. 76760 (England) | VAT Reg. No. 174 4084 28
Reg. Office: Bentham Auction Mart, Bentham, Lancaster

Directors: R Turner, NJ Allan, D Crackles, K Duncan, DG Lawson, JF Metcalfe.

10.30AM FEEDING & CAST COWS

Followed By

Annual Show & Sale of

206 SUCKLED CALVES

Sold in Ballot Order

Classes for Best Bull, Best Heifer & Best Steer. Judging to Commence at 10.15am.

PEN	LOT	VENDOR	NO	BREED	SEX	AGE	TB	FA
<u>TOP BUILDING</u>								
76	1-2	B Cooper, Croft House	2	BrB/Here	Blks	7m	4	FA
75	3-6	CR Alderson & Son, Aisgill	4	Blonde x	Bulls	5-6m	4	
73-74	7-14	J & W Bracewell, Top of the Heights	8	Lim x	Bulls/ Hfrs	6m	4	
72	15-18	J Middleton & Co, Deepdale Head	4	Lim	Bulls/ Hfrs	5m	4	FA
71	19-23	TW & BH Woodhouse & Partners, Middle Salter	5	Char	Blks	6m	4	FA
70	24-29	JM Smith, Lile Yaks	6	BAX	Mxd	6-12m	4	FA
68-69	30-36	JM Kelsall & Son, Low Pleasant	7	Lim x	Bulls	8m	4	
63-67	37-44	JM & JJ Dawson, Field Head Farm	8	Lim x	Bulls	6-8m	4	FA
63-67	45-56		12	Lim x	Hfrs	6-8m	4	FA
63-67	57		1	Lim x	Blk	6-8m	4	FA
				BVD Acc, Wormed				
61-62	58-67	GJ & GM Ibbotson, Higher Salter	10	Char x	Bulls	6m	4	FA
59-60	68-77		10	Char x	Hfrs	6m	4	FA
56-57	78-85	GR & A Foy & Son, Parkside	8	BrB x	Bulls	6-7m	4	FA
58	86-87		2	BrB x	Hfrs	6-7m	4	FA
54-55	88-96	R Johnson, Winder	9	Lim x	Bulls	8m	4	FA
53	97-101	R & BJ Cleasby, Lower Hawthwaite	5	Char x	Blks/Hfrs	6-7m	4	FA
3-4	102-111	Frankland Farms, New Hall Farm	10	Lim x/ Brb x	Blks/Hfrs	8-10m	4	FA
5-8	112-126	D Eames, Middle Lee	15	Char x	Blks	6m	4	FA
5-8	127-131		5	Char x	Hfrs	6m	4	FA
9-18	132-146	Fishwick Farms, Bank House Farm	15	Lim x	Blks	10m	4	FA
9-18	147-168		22	Lim x	Blks	7-8m	4	FA
9-18	169-183		15	Lim x	Hfrs	7-8m	4	FA
				Reg. with Surecalf Scheme				
19	184-187	HM Hodgson, Low Garth	4	Lim x	Bulls/ Blks	8m	4	
20	188-189		2	Lim x	Hfrs	8m	4	
21	190-193	JW Bentham & Son, Bridge End	4	Lim x	Bulls/Hfrs	6-7m	4	
22	194-195	CE & MI Middleton & Son, Helks Bank	2	Lim x	Blks	8-10m	4	FA
22	196		1	Blonde x	Blk	9m	4	FA
23-24	197-204	W Atkinson & Son, Low Fold	8	AA (NS)	Mxd	6-9m	1	FA
25	205	E Noblett, Crook Farm	1	BrB	Bull	6m	4	
25	206		1	AA	Bull	6m	4	

FARMERS STIRKS

Ballot to be Drawn on the Day

VENDOR	NO	BREED	SEX	AGE	TB	FA
EW & RM Towers, Holme Head	27	Fleck/ NR	Blks	15-16m	4	FA
Messrs Ellwood, Heathwaite	11	AA x	Blks	10-14m	1	FA
	7	AA x	Hfrs	12-14m	1	FA
D Knipe, High Carlingill	7	AA x	Hfrs	11m	4	
	6	AA x / BrB x	Blks	11m	4	
	4	BW	Blks	11m	4	
J Middleton, Arncliffe	6	Lim x	Mxd	12m		
SE Lord, Lower Salter	4	BB x	Mxd	15m	4	
	1	Lim	Blk	15m	4	
SC Brown, Lane House	14	Baz	Mxd	15-16m	4	
MJ & JM Lawson, Lund Farm	3	Here (NS)	Blks	12-14m	4	
	2	AA (NS)	Blks	12-13m	4	
	1	Fleck	Blk	14m	4	
	2	BB	Mxd	14-15m	4	
MB & JK Townley, Straights Head	5	AA (NS)	Mxd	16m	4	FA
	1	Sim	Blk	16	4	FA
H Halhead & Sons, Lawsons Farm	15	B + W	Blks	12-14m	4	FA
TN Airey & Son, Black Bank	3	Baz x	Mxd	13-14m	4	FA
	3	Fleck	Blks	13-14m	4	FA
WA Ward & Son, Ancliffe Hall	6	B + W	Blks	12-14m	4	FA
R & EM Cornall, Lane House	6	B + W	Blks	17m	4	FA
	1	B + W	Hfr	17m	4	FA
	2	Here/AA (NS)	Blks	16m	4	FA
RJ & YL Willison, Cinderbarrow	7	BrB x	Blks	19-24m	4	FA
PW & DW Roskell, Springfield Farm	40	B + W	Blks	14-16m	4	FA
	10	AA/Here/BrB	Blks	12-13m	4	FA
RC Shepherd, The Grange	3	Limx/Here x	Hfrs	13m	4	
RM Wilson, Gill Garth	6	Lim x	Hfrs	10m	4	FA
Messers Young, Moss End	6	BrB x	Mxd	6-7m	1	FA
	7	Here	Hfrs	6-7m	1	FA
	1	Sim	Hfr	6-7m	1	FA
	2	Lim/AA	Blks	6-7m	1	FA
S Geldard, Garden Terrace	7	AA (NS)	Blks	11-12m		
WT Whitaker, Lane Ends Farm	5	Fri	Blks	14m	4	FA
GE & JA Hayhurst, Brunstow	2	B + W	Blks	15m	4	
RT & P Bainbridge, Ullathorns	5	B + W	Blks	13m	4	FA
R Packham & Son, Docker Hall	9	Fleckvieh x	Blks	13-15m	4	FA
RW Bainbridge & Son, Outfield	6	B + W	Blks	15m	1	FA
MD Close & Son, Docker Hall	6	BrBx/ AAx	Mxd	10-12m	4	FA
	4	B + W	Blks	10-12m	4	FA
G Sunter, Gill Foot	5	Shorthorn	Blks	12-13m	4	FA
	1	Fleckvieh	Bull	6m	4	FA
R & S Wilcock, Scaleber	4	Here	Blks	15m	4	FA
	2	B + W	Blks	15m	4	FA
DF Ibbetson, Little Haven	6	Char x/ AA x	Mxd	16-17m	4	
	2	Char x	Mxd	6m	4	
F & K Estates, Croasdale	10	Char x	Mxd	11m	4	
Messrs Wagstaff, Pond House	10	Cont x	Mxd	7-10m		

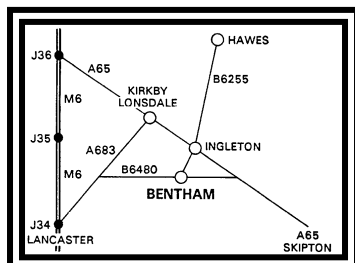
VENDORS NOTE:

Please have your cattle unloaded and paperwork handed in at the office before 10.30. The Auction Staff will lot your cattle up for you upon arrival. Please ensure that your passports match the animals tags and that the breed and sex are correct. **Any vendors selling cattle from a 1 or 2 year TB holding, must have a copy of their TB test to be checked at the office (test must have been completed within 60 days of the sale date).**

UNLOADING:- ALL CATTLE TO BE UNLOADED AT BOTTOM DOCKS

PURCHASERS NOTE: All purchasers have two working days from time of sale to satisfy themselves that all documentation received is correct and any discrepancies must be notified to the auctioneers within that time limit.

CONDITIONS OF SALE: All Stock are sold under the National Conditions of Sale as recommended by the Livestock Auctioneers Association, as displayed in the Auction Mart Office.



DIRECTIONS

The Auction Mart is situated in the centre of High Bentham, approx. 2 miles from Ingleton off the A65 Skipton-Kendal trunk road, 12 miles east from the M6 (Junction 34 to A683 & B6480).

Post Code for Sat Nav - LA2 7HF

Wednesday 16th October

SHOW & SALE OF MULE PRIME LAMBS (Pens of 5)

Saturday 19th October

THREE COUNTIES OCTOBER SHEEP FAIR

All classes of Breeding Sheep & Gimmer Lambs including
**3RD SPECIAL SALE OF MULE, MASHAM & OTHER BREEDING EWES,
GIMMER SHEARLINGS & GIMMER LAMBS
2ND SPECIAL SALE OF HORNED DRAFT EWES
& HORNED GIMMER LAMBS**

Tuesday 22nd October

FORTNIGHTLY SALE OF STORE LAMBS

Entries for catalogue close Monday 14th October

Wednesday 23rd October

FORTNIGHTLY DAIRY SALE

Show & Sale of Newly Calved Dairy Cattle

Tuesday 29th October

**GREAT ANNUAL SALE OF IN CALF SUCKLER CATTLE, ALSO
COWS/HEIFERS WITH CALVES AT FOOT & BREEDING BULLS
SPECIAL SALE OF STORE LAMBS**

Entries for catalogue close Monday 21st October