



**BENTHAM
AUCTION
MART**

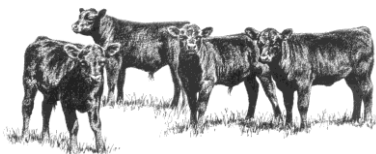
Tuesday 5th November 2019

40-50 Feeding & Cast Cows

Followed by

70

SUCKLED CALVES



120

STORE CATTLE

Sale to Commence at 10.30am

Please bring this Catalogue to the Sale

Telephone: Sales Days: 015242 61246 | Other Days: 015242 61444 | Fax No.: 015242 63857

Email: info@benthamauction.co.uk | Website: www.benthamauction.co.uk

All correspondence to Auctioneers & Secretaries:
Richard Turner & Son, Royal Oak Chambers, Main Street, High Bentham, LA2 7HF

Reg. No. 76760 (England) | VAT Reg. No. 174 4084 28
Reg. Office: Bentham Auction Mart, Bentham, Lancaster

Directors: R Turner, NJ Allan, D Crackles, K Duncan, DG Lawson, JF Metcalfe.

71 SUCKLED CALVES

PEN	LOT	VENDOR	NO	BREED	SEX	AGE	TB	FA
MIDDLE BUILDING								
25	1-4	M Dixon, Barn Hey Farms	4	Lim x	Bulls	6-7m	4	
26-27	5-12	MJ & RE Smith, The Oaks	8	Lim x	Mxd	7-8m	1	FA
				<i>BVD Acc.</i>				
28	13-18	R & BJ Cleasby, Lower Hawthwaite	6	Char	Mxd	6-8m	4	FA
29	19-23	SJ & M Richardson & Son, High Row	5	¾ Blonde	Mxd	6-8m	4	FA
3031	24-31	J & W Bracewell, Top of the Heights	8	Cont	Mxd	6-8m	4	
32-33	32-39	R & AJ Haworth, Brex Farm	8	Cont	Bulls/ Hfrs	6-8m	4	FA
34-35	40-47	RJ Scholefield, Folds Farm	8	Lim x Here	Bulls/ Hfrs	6-8m	4	
37	48-51	T & S Blades, Hill Top Farm	4	Lim x/ BB x	Mxd	7-8m	4	FA
39	52-55	CR Alderson & Son, Aisgill	4	Blonde x BrB	Bulls	7-8m	4	
40, 42, 44 & 46	56-71	D Breaks, Church Style	16	Char/ Mxd	Bulls/ Blks/ Hfrs	6-7m	4	

109 STORE CATTLE

PEN	LOT	VENDOR	NO	BREED	SEX	AGE	TB	FA
BOTTOM BUILDING								
201	72-74	TN Airey & Son, Black Bank	3	BB	Blks	18-24m	4	FA
202	75-76	MB Fawcett, Stainerber	2	Lim x	Blks	15-17m	4	FA
203-205	77-81	Low Moor Howe, High House Farm	5	Sim x Luig x	Blks	18m	4	
203-205	82-86		5	Luig x	Blks	18m	4	
206	87	TF & DA Brown, Ireby Farm	1	Lim	Hfr	15m	4	FA
206	88		1	BB x	Hfr	29m	4	FA
206	89		1	BrB x	Hfr	29m	4	FA
207-208	90-94	SW & K Metcalfe, Holme House Farm	5	Here (NS)	Mxd	18-21m	4	FA
209-210	95-100	TE & S Ridding, Ivy Cottage	6	B + W	Blks	15m	4	FA
211-212	101-105	J Harvey, Low House	5	Cont/AA	Hfrs	22-24m	4	FA
213	106-108		3	Cont/AA	Blks	22-24m	4	FA
214	109-110		2	B + W	Blks	22-24m	4	FA
215	111-114	GR & J Batty, Summersgill	4	Lim x	Mxd	17m	4	FA
216-217	115-119	MJ Robinson, Scalemire	5	AA x	Mxd	24m	4	FA
218	120	WG & L Taylor, Brentwood	1	Hol Fr	Hfr	24m	4	FA
219-220	121-125	JA Parker, Oaklands Farm	5	BrB x	Mxd	24m		
				<i>BVD Tested</i>				
221-223	126-135	F & K Estates, Croasdale Grains	10	Char x	Mxd	15-18m	4	
224	136-137		2	Here x	Blks	15-18m	4	
225	138-141	A & CT Scott, Lamb Hill	4	Here	Blks	20m	4	FA
226-227	142-147	JT & J Kelsall, Summerlands	6	Cont	Blks	20-24m	4	FA
228	148-151	J, BL & I Ellis, Hawkrigg End	4	BrB/AA	Mxd	24m	4	FA

229	152	Messrs J Armstrong, Croft House	1	Shorthorn	Hfr	16m	4	
229	153		1	Here	Hfr	16m	4	
229	154		1	Devon	Blk	16m	4	
230	155-156		2	Devon	Hfrs	16m	4	
231-233	157-164	TH Wensley & Sons, Plumpton Hall	8	B + W	Blks	20-23m	4	FA
231-233	165-166		2	Lim	Blks	18-20m	4	FA
234	167-168	FA Nowell & Partners, Oak Head	2	Here x	Hfrs	25-26m	4	FA
235	169-170	DJ & EM Barton, Sunny Bank	2	Lim x	Blks	12m	4	
236	171-172	NJ & L Allan, Beck House	2	BrB	Blks	26-28m	4	FA
237	173-176	SJ & AL Dennis, High Bottom Farm	4	BrB	Blks	24-28m	4	FA
238	177-180		4	AA/ Here	Blks	15-18m	4	FA
239-245		SALE DAY ENTRIES						

UNLOADING

ALL CATTLE TO UNLOAD AT BOTTOM DOCKS

BUYERS NOTE:

All purchasers have two working days from time of sale to satisfy themselves that all documentation received is correct and any discrepancies must be notified to the auctioneers within that time limit. All stock must be removed from the auction by 7am Wednesday

VENDORS NOTE:

All Cattle must have two approved ear tags.

Paperwork to be handed in to the office as early as possible (at least 45 mins prior to cattle being sold)

Please note that any cattle sold from a 1 or 2 Year TB Holding must have been pre-movement tested within the 60 days previous to the sale.

Copies of the TB test must be handed in to the office with your entry form and passports.

CONDITIONS OF SALE:-

All Stock are sold under the National Conditions of Sale as recommended by the Livestock Auctioneers Association, as displayed in the Auction Mart Office.

Tuesday 12th November
FORTNIGHTLY SALE OF STORE LAMBS
CLOSING SALE OF BREEDING SHEEP & RAMS

Tuesday 19th November
Feeding & Cast Cows & OTM Cattle
MONTHLY SALE OF FARMERS STIRKS

Wednesday 20th November
CHRISTMAS SHOW & SALE OF DAIRY CATTLE
Classes for Pedigree & Non- Pedigree
Newly Calved & In Calf Dairy Cattle

Tuesday 26th November
FORTNIGHTLY SALE OF STORE LAMBS

Wednesday 27th November
Christmas Show & Sale of Long Wooled Prime Lambs

Tuesday 3rd December
CHRISTMAS SHOW & SALE OF CULL COWS
MONTHLY SALE OF SUCKLER BREEDING CATTLE
CHRISTMAS SHOW & SALE OF
STORE CATTLE & FEEDING BULLS
Entries for catalogue close Monday 25th November

Wednesday 4th December
FORTNIGHTLY DAIRY SALE
Show & Sale of Newly Calved Dairy Cattle
CHRISTMAS SHOW & SALE OF
REARING CALVES & WEANLINGS
CHRISTMAS SHOW & SALE OF SHORT WOOLED
PRIME LAMBS (Pens of 5)