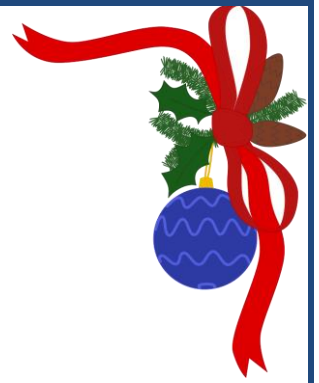


**BENTHAM  
AUCTION  
MART**

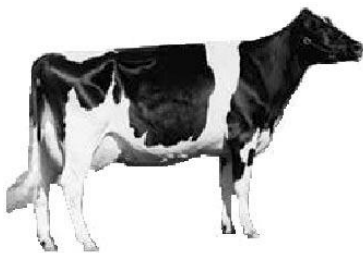


Wednesday 20<sup>th</sup> November

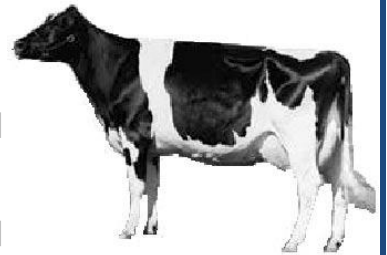
# **Christmas Show & Sale of 45 NEWLY CALVED**



## **& IN CALF**



# **DAIRY CATTLE**



**Sale Commences at 11.00am**

Telephone: Sales Days: 015242 61246 | Other Days: 015242 61444 | Fax No.: 015242 63857

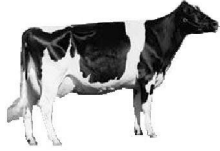
Email: [info@benthamauction.co.uk](mailto:info@benthamauction.co.uk) | Website: [www.benthamauction.co.uk](http://www.benthamauction.co.uk)

All correspondence to Auctioneers & Secretaries:  
Richard Turner & Son, Royal Oak Chambers, Main Street, High Bentham, LA2 7HF

Reg. No. 76760 (England) | VAT Reg. No. 174 4084 28  
Reg. Office: Bentham Auction Mart, Bentham, Lancaster

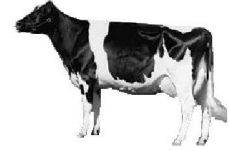
Directors: R Turner, NJ Allan, D Crackles, K Duncan, DG Lawson, JF Metcalfe.

# Christmas Show & Sale of Dairy Cattle



## JUDGING SCHEDULE

JUDGING TO COMMENCE AT 10.00am



### JUDGES:-

- Class 1 Best Newly Calved Cow
- Class 2 Best Newly Calved Heifer
- Class 3 Best B&W Pedigree Cow
- Class 4 Best B&W Pedigree Heifer
- Class 5 Best Coloured Cow/Heifer
- Class 6 Best Cow or Heifer Bred on Holding
- Class 7 Best I/C Cow or Heifer
- Reserve Champion & Champion

**(NB:- No animal to be shown in more than one class.**

**Maximum of 2 Entries per Vendor per Class**

**All animals put forward for the show to be warranted fully correct)**

## Kindly Sponsored By:



**I'Anson**  
Quality Feeds

**Thornton**  
4x4 Breakers

**Dalehead**  
Veterinary Group Ltd

**Specialist Farm Vets**  
24 Hours A Day 7 Days A Week

A dedicated and experienced farm vet practice offering a wide range of services for Dairy, Beef and Sheep Farms

**01729 823538**

SETTLE | NORTH YORKSHIRE  
Offices at BENTHAM & GISBURN

[www.daleheadvetgroup.co.uk](http://www.daleheadvetgroup.co.uk)

**P.V.**  
DOBSON

Tractors, Machinery, Diggers & Pick-Ups  
Call Paul Taylor  
**07921 874840**

**JS**  
Accountancy

**Rural Energy Saving Grants**  
Get a Cosy, Damp-Free Home  
This Winter - **100% FREE**

If You Have Solid Walls &  
No Central Heating  
Call Rebecca Today on:  
**016974 72830**

[www.ruralenergysavinggrants.co.uk](https://www.ruralenergysavinggrants.co.uk)

[@ruralenergysaving](https://www.facebook.com/ruralenergysaving)

A Proud Member of  
**THE FARMER NETWORK**

**GFP**  
PLANT HIRE & AGRI

Is your Trailer DVSA Ready? + Hydraulic Hoses & Parts

Trailer Parts, Servicing & Sales

**015242 62888**

Unit 3 Bentham Industrial Estate  
Bentham, Lancaster, LA2 7NB  
[sales@fawcettplant.co.uk](mailto:sales@fawcettplant.co.uk)

**ENTRIES TO DATE INCLUDE:-****Newly Calved Dairy Cattle**

J Robinson, Hoggetts	1	NC Pedigree Heifer
	1	NC Pedigree 2 <sup>nd</sup> Calved Cow
G Jennings, Hill House Farm	2	NC Heifers
P Knowles, Cragg Farm	3	NC Heifers
FG & MR Martin, Lords Plain	3	NC Pedigree Heifers
M & R Smith, Rookery Farm	1	NC Heifer
R & E Butterfield, Linghaw Farm	1	NC Pedigree Cow
	1	NC Pedigree Heifer
MJ & H Atkinson, Westfield House	1	NC Pedigree Heifer
	1	NC Pedigree 2 <sup>nd</sup> Calved Cow
CE & MI Middleton, Helks Bank	1	NC 2 <sup>nd</sup> Calver
R & J Dodgson, Cracalt Farm	2	NC Heifers
R Lawson, Deerslet Farm	1	NC Ped Heifer
PW & DM Swindlehurst, Tranthwaite Hall	1	NC 2 <sup>nd</sup> Calved Cow
J Huddleston, Ravenscar	3	NC Heifers
W & C Gorst & Sons, Hole of Ellel	1	NC Pedigree Heifer
J & M Whitfield & Sons, High Park House	1	NC Pedigree 2 <sup>nd</sup> Calved Cow
RE & EA Barker, Gunnerthwaite	2	NC Ped Heifers
GW Whitwell, Lanshaw Farm	2	NC 2 <sup>nd</sup> Calved Cows
R Sunderland, Aspatria	1	NC Heifer
	1	NC Ayrshire x Heifer
Booth Bros, Wigglesworth Hall	1	NC Pedigree Heifer
	1	NC Pedigree 2 <sup>nd</sup> Calved Cow
JT & B Fox, Blackwood End	1	NC Pedigree Heifer
H Wright & Son, Berryholme	1	NC Pedigree Heifer
N & J Holden, Chestnut House	1	NC Heifer
J & H Bland, Ninezergh	1	NC Crossbred Heifer
	1	NC Crossbred 2 <sup>nd</sup> Calver
PD & BS Lawrence & Son, Holme Farm	1	NC Pedigree Heifer
BW & G Robinson, Burnt House	1	NC Heifer
G & ME Woodhouse, Boldens Farm	2	NC Heifers
AH Price & Son, Long Bank	1	NC 2 <sup>nd</sup> Calved Cow

**In Calf Dairy Cattle**

K & A Duncan, Mewith Head	1	Holstein Friesian Heifer due December to BW
	1	Holstein Friesian Heifer due End January to AA

**ENTRIES ACCEPTED & BALLOT DRAWN ON SALE DAY**

**ENTRIES RECEIVED AS OF FRIDAY 15<sup>th</sup> NOVEMBER. SEE WEBSITE FOR UPDATES**



**Tuesday 3<sup>rd</sup> December**

**Christmas Show & Sale of Cull Cows  
Monthly Sale of Suckler Breeding Cattle  
Christmas Show & Sale of  
STORE CATTLE & FEEDING BULLS**

**Wednesday 4<sup>th</sup> December**

**Christmas Show & Sale of  
Rearing Calves & Weanlings  
Christmas Show & Sale of  
Short Woored Prime Lambs (Pens of 5)**

**Wednesday 11<sup>th</sup> December**

**Christmas Show & Sale of  
Cast Ewes**

**Tuesday 17<sup>th</sup> December**

**Feeding & Cast Cows & OTM Cattle  
CHRISTMAS SHOW & SALE OF  
FARMERS STIRKS**

**PLEASE CONTACT THE OFFICE WITH ENTRIES FOR ADVERTISEMENT**

**Wednesday 18<sup>th</sup> December**

**Winter Dairy Day**

**Show & Sale of Newly Calved Dairy Cattle  
Kindly Sponsored by NFU Mutual**

