



**BENTHAM
AUCTION
MART**

**Wednesday
8th January 2020**

11am

SEMEX DAIRY DAY

25-30

**Newly Calved
Dairy Cattle**

BENTHAM AUCTION MART

Main Street

Bentham

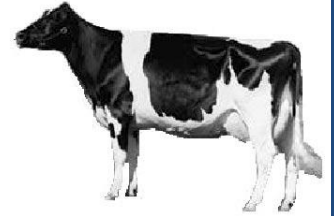
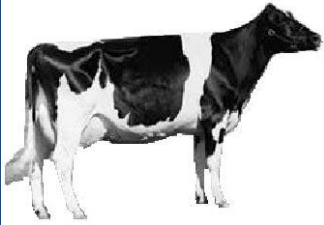
LA2 7HF

CPH: 48/840/8001

www.benthamauction.co.uk

bentham@rtturner.co.uk

[@benthamauctionmart](https://twitter.com/benthamauctionmart)



Semex Dairy Day

JUDGING SCHEDULE

JUDGING TO COMMENCE AT 10.30am

Class 1 Best Newly Calved Cow

Class 2 Best Newly Calved Heifer

(Maximum of 2 Entries per Vendor Per Class)



**All animals put forward for the show
to be warranted fully correct**



Kindly Sponsored By Semex

ENTRIES TO DATE INCLUDE:-

J & M Whitfield, High Park House	1	NC 3 rd Calved Cow
BW & M Haygarth & Son, Manor Farm	1	NC Heifer
G Jennings, Hill House	1	NC Heifer
J Robinson, Hoggetts Farm	3	NC Pedigree Heifers
J Huddleston, Ravenscar	3	NC Pedigree Heifers
PW & DM Swindlehurst, Tranthwaite Hall	3	NC Pedigree Cows
	3	NC Pedigree Heifers
R Lawson, Deerslet Farm	1	NC Pedigree Heifer
MJ & H Atkinson, Westfield House	1	NC Pedigree Heifer
P Knowles, Cragg Farm	2	NC Friesian Heifers
	2	NC Heifers
G & ME Woodhouse, Boldens Farm	1	NC Heifer
	1	NC Cow
GW Whitwell Ltd, Lanshaw Farm	1	NC Heifer
CG Birkett, Netherbeck Barn	2	NC 2 nd & 3 rd Calved Cows
WT Whitaker & Son, Lane Ends	1	NC Friesian 2 nd Calver
J & J Burrow, Thursgill	2	NC Heifers
TA & RM Dawson, Lower Brow Top	1	NC Heifer
JG& BJ Escolme, Low Stangerthwaite	1	NC Heifer
France Bros, Foxdale Cottage	2	NC Heifers

ENTRIES ACCEPTED & BALLOT DRAWN ON SALE DAY

AUCTIONEERS: WILL ALEXANDER- 07590 876 849

STEPHEN DENNIS- 07713 075 661

GREG MACDOUGALL- 07713 075 664