



**BENTHAM
AUCTION
MART**

Tuesday 7th January 2020

**10.30am 40-50 Cull Cows & OTM Cattle
Followed by Suckler Breeding Cattle &**

**NEW YEAR SALE OF
225 STORE
CATTLE**

Followed by

**1000 STORE HOGGS
In the Top Sale Ring at approx. 12noon**

Please bring this Catalogue to the Sale

Telephone: Sales Days: 015242 61246 | Other Days: 015242 61444 | Fax No.: 015242 63857

Email: info@benthamauction.co.uk | Website: www.benthamauction.co.uk

ALL CATTLE TO UNLOADED AT BOTTOM DOCKS

BREEDING CATTLE

Sale day entries as followed

STORE CATTLE

PEN	LOT NO	VENDOR	NO	BREED	SEX	AGE	TB	FA
BOTTOM BUILDING								
251	1-2	JA&E Metcalfe, Old Cote Farm	2	AA/BSH	Blks	21-22m		
252	3-4		2	Her	Blks	16m		
253-254	5-9	B & J Park, West Rackenthwaite	5	B+W/SH	Blks	17-20m	4	FA
255	10-11	JS & JJ Metcalfe, Manor House	2	AA FTB	Hfrs	17m	4	FA
255A	12		1	AA	Hfr	18m	4	FA
256-260	13-32	CA&J Alty & Son, Moss House	20	B+W	Blks	17m	4	FA
260A	33-34	J & E Hacking, High Leck Farm	2	AA NS FTB	Hfrs	15-16m	4	
261-264	35-49		NJ&L Allan, Beck House	15	Lim	Blks	18-22m	4
265	50-52	A & Y Allan, Lune View	3	Lim	Blks	18-22m		
266-269	53-64	JA&R Caton, Otterburn Lodge	12	Ctl	Blks	18-20m	4	FA
270	65-68	W & R Mashiter, Harterbeck	4	B + W	Blks	24m	4	
201-202	69-73	ST Birkett, Hall Croft Barn	5	BB	Blks	15m	4	FA
203	74-75	JT&J Kelsall, Summerlands	2	Lim	Blks	18-20m	4	FA
204-205	76-83	GC&PM Haygarth & Daughter, Aigen Farm	8	Blue Grey	Hfrs	17m	4	FA
206	84-87	CR&GJ Greenwood, Rigg End	4	Lim	Blks	11m	4	FA
207-208	88-92	D Lawson, Oak Bank	5	Ctl	B/H	24m	4	FA
209	93-95		3	B + W	Blks	25m	4	FA
210	96-98		3	Lim	Hfrs	22-23m	4	FA
211-220	99-138		S H Bowes, Harbarrow Farm	40	B+W	Blks	17-22m	4
221	139-140	WC&M Middleton, Drybeck Farm	2	Lim	Blks	21m	4	
222-223	141-145	KG & LM Park, Low Fell End	5	BB	Blks	26-28m		FA
224-225	146-151	R M Whitton, Aynsome Manor Farm	6	AA	Blks	25m	1	FA
226	152-155	J Hartley & Sons, Masongill Hall	4	B+W, Lim, AA	Blks	24-25m	4	FA
227	156-157	TH Wensley & Sons, Plumpton Hall	2	Lim	Blks	22m	4	FA
228-230	158-166		9	B + W	Blks	20-24m	4	FA
231-235	167-186		PM & AM Ward & Sons, Docker	20	B+W	Blks	20-22m	4
236	187-188	R Middleton, Newlands	2	Her NS	Blks	20m	4	FA
236	189		1	Her NS	Hfr	20m	4	FA
237	190-193	J Bargh & Son, Waterscales	4	AA NS FTB	Hfrs	15-17m	4	FA
238	194		1	Here NS	Blk	21m	4	FA
238	195		1	B + W	Blks	17m	4	FA
239	196-197		Huddleston & Longton, Oak Head	2	Lim	Hfrs	24-36m	4
240	198-199	M Yorke, Thwaite Farm	2	BBx	Blks	20-22m	2	
241-242	200-205	James Philip Projects, Caley Barn	6	B+W	Blks	30m	4	
243	206	T W Hartley, Dee View	1	AA NS	Blk	16m	4	
244	207-209	A & CM Taylor, Botton Head	3	Here x NS	Hfrs	25-27m	4	FA
245	210		1	BBx	Blk	26m	4	FA
271-280		SALE DAY ENTRIES						

NOTE TO VENDORS: All Cattle must have two approved ear tags.

Lot Numbers are enclosed – Please bring them along with you on the sale day.

Paperwork to be handed in to the office as early as possible (at least 30 mins prior to cattle being sold). PLEASE ENSURE THAT LOT NUMBERS CORRESPOND CORRECTLY WITH THE BEAST EAR TAG NUMBER & THE SEX & BREED ON THE PASSPORT MATCH THE BEAST.

Please note that any cattle sold from a 1 or 2 Year TB Holding must have been pre-movement tested within the 60 days previous to the sale. Copies of the TB test must be handed in to the office with your entry form and Passports.

NOTE TO CATTLE PURCHASERS All purchasers have two working days from time of sale to satisfy themselves that all documentation received is correct and any discrepancies must be notified to the auctioneers within that time limit. All stock must be removed from the auction by 7am Wednesday.

FOLLOWED BY

SALE OF 1000 STORE HOGGS

Sale Commences at 12.30pm

ALL SHEEP TO BE UNLOADED AT TOP DOCKS. TO BE PENNED IN TOP BUILDING

Entries Inc:

C Metcalfe & Sons, Lease House	20	Swale	
J Handley, Thornton Hall	25	Swale	
J & C Wright, Legrams Laithe	50	Mixed	OVI2, minerals, wormed
NJ&L Allan, Beck House	30	Mule	
A & L Huddleston, Overhouses	20	Mule	HP2, O
CR&GJ Greenwood, Rigg End	20	Swale	
JW Hargreaves, Bridge End	50	Swale	
TR Charnley, Jonty Lee Stables	15	Swale	
Fishwick Farms, Bank House	40	Texel x	HP
Matinley Farms, Shielswood Farm	300	Texel/ Suffolk	
D Ibbetson, Little Haven	20	Suffolk/ Texel	
GI & M Faraday, Fell End Farm	40	Swale Wethers	HP2
JW & C Metcalfe & Son, Hare Appletree	50	Swale	
Rowland & Woodward, Furlongs Farm	350	CTL/ Suffolk	

ENTRIES ACCEPTED & BALLOT DRAWN ON SALE DAY

CONDITIONS OF SALE:- All Stock are sold under the National Conditions of Sale as recommended by the Livestock Auctioneers Association, as displayed in the Auction Mart Office.

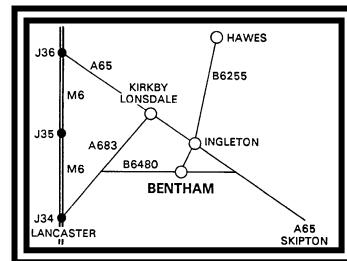
NOTE TO VENDORS -ALL SHEEP MUST BE ACCOMPANIED BY A COMPLETED ARAMS-1 FORM

All Tup Lambs are to be declared and sold separately. Vendors are advised to Scab Dip or Treat animals with a DEFRA Scab approved product

SHEEP MEDICINES:- Vendors must advise at the time of sale if any of their animals are still within a withdrawal period for any medicines.

DIRECTIONS

The Auction Mart is situated in the centre of High Bentham, approx. 2 miles from Ingleton off the A65 Skipton-Kendal trunk road, 12 miles east from the M6 (Junction 34 to A683 & B6480).



WEDNESDAY 8TH JANUARY



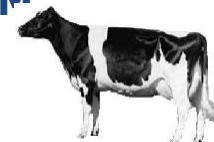
The First Sale of Dairy Cattle for 2020 **'SEMEX DAIRY DAY'**



JUDGING AT 10.30AM SALE COMMENCES AT 11AM



Classes for Best Newly Calved Cow/Heifer



WEDNESDAY 8TH JANUARY

YFC SINGLES NIGHT

Prizes for Best Single Prime Hogg
(Lowland & Hill Breeds) &
Best Presented Prime Hogg & Vendor shown by a Young Farmer
(under 27 years old)

Tuesday 21st January

10.30am Feeding & Cast Cows & OTM Cattle

11.30am MONTHLY SALE OF FARMERS STIRKS

followed by **SALE OF STORE HOGGS**



Wednesday 22nd January

'The Winter Blues'

Prizes for British Blue Sire Calves (Under 60days)



Tuesday 28th January

1st Winter Sale of IN LAMB BREEDING SHEEP

Entries for catalogue close Monday 20th January