

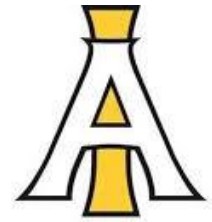


**BENTHAM  
AUCTION  
MART**

**Wednesday 9<sup>th</sup> December**



**I'ANSON**



**I'Anson**  
*Quality Feeds*

**WINTER**

**I'Anson**  
*Quality Feeds*

**DAIRY DAY**

**20-25 Newly Calved Dairy Cattle**

**COVID PROTOCOL TO BE FOLLOWED**

**One Vendor per Consignment. Buyers MUST register on arrival.  
Facemasks compulsory.**

**BENTHAM AUCTION MART**

Main Street

Bentham

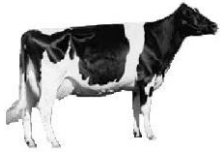
LA2 7HF

CPH: 48/840/8001

[www.benthamauction.co.uk](http://www.benthamauction.co.uk)

[bentham@rtturner.co.uk](mailto:bentham@rtturner.co.uk)

[@benthamauctionmart](https://www.instagram.com/benthamauctionmart)



# Winter Dairy Day

## 10.30am Sale of Newly Calved Dairy Cattle



J Huddleston, Ravenscar	2	Pedigree Heifers
JS & J Walmsley, Chimney Barn Farm	1	Heifer
	1	2 <sup>nd</sup> Calved Cow
G Jennings, Hill House Farm	3	Heifers
P Knowles, Cragg Farm	2	Heifers
J Robinson, Hoggets	1	Pedigree Heifer
	1	Pedigree 2 <sup>nd</sup> Calved Cow
JT & B Fox, Blackwood End	1	Pedigree Heifer
DJ Townley, Whinney Carr Farm	4	Heifers
GW Whitwell Ltd, Lanshaw	2	2 <sup>nd</sup> Calved Cows
J & M Whitfield, High Park House	1	Pedigree 2 <sup>nd</sup> Calved Cow
MJ & H Atkinson, Westfield House	1	Pedigree Heifer

**Further Entries Expected. Please see website for updates.**

### AUCTIONEERS:

Will Alexander 07590 876 849

Stephen J Dennis 07713 075 661 Greg MacDougall 07713 075 664

**OFFICE:** 015242 61444/ 61246 (sale days)

## COVID-19 PROTOCOL

### \*\*VENDORS \*\*

- a) **Only one vendor may attend per consignment** i.e no extra family members or onlookers
- b) Prior to sale, vendors may wash their cattle and stand by their animal(s) but must respect social distancing
- c) Vendors to follow their stock to the ring and represent their animals in the usual manner
- d) Following the sale of their stock, vendors to leave the sale ring (i.e. not to remain to watch other stock being sold, liaise with buyers)
- e) Luck money etc to be sorted by the auction staff as has recently been the case
- f) Vendors at all times to maintain 2 metre social distancing

Any instructions regarding luck and reserves, if any, along with as much information as possible with regards to your entries, should be given to the auctioneers/clerk in writing prior to the sale.

### \*\*\*\* PURCHASERS \*\*\*\*

**Please pre-register with the auctioneers or the office your intention to attend.**

You will also be required to register at the sale ring entrance prior to the sale. Pre-sale viewing of stock will be allowed subject to social distancing being maintained. During the sale, please respect social distancing.