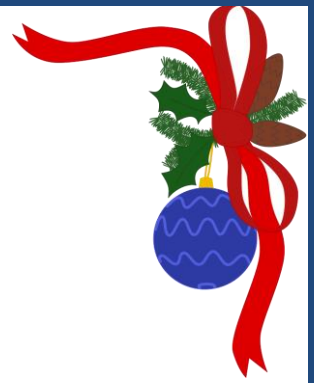


**BENTHAM  
AUCTION  
MART**



Wednesday 25<sup>th</sup> November

**Christmas Show & Sale of**

**65 NEWLY CALVED**

**& IN CALF**



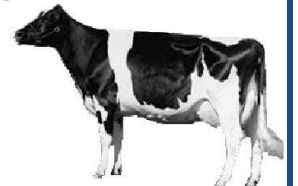
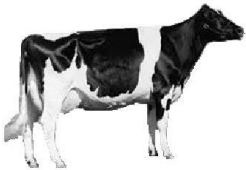
**DAIRY CATTLE**

Including

**21 Newly Calved Cows & 32 Heifers**

**12 In Calf Heifers**

**Sale Commences at 10.30am**



*Shows to be held in accordance with Covid 19 guidance as directed by the LAA/ government. One vendor per consignment, no onlookers. Shows subject to change in order to comply with changing protocol.*

**BENTHAM AUCTION MART**

Main Street

Bentham

LA2 7HF

CPH: 48/840/8001

[www.benthamauction.co.uk](http://www.benthamauction.co.uk)

[bentham@rtturner.co.uk](mailto:bentham@rtturner.co.uk)

[@benthamauctionmart](https://www.instagram.com/benthamauctionmart)

# Christmas Show & Sale of Newly Calved & In Calf Dairy Cattle

<b><u>Newly Calved Dairy Cattle</u></b>		
J Robinson, Hoggetts Lane	1	Pedigree Heifer
	1	Pedigree 2 <sup>nd</sup> Calved Cow
G Jennings, Hill House Farm	3	Heifers
P Knowles, Cragg Farm	3	Pedigree Heifers
	2	Heifers
BW & M Haygarth & Son	1	Heifer
R & E Butterfield, Linghaw Farm	3	Pedigree Heifers
	1	Pedigree 2 <sup>nd</sup> Calved Cow
MJ & H Atkinson, Westfield House	2	Pedigree Heifers
CE & MI Middleton, Helks Bank	1	Heifer
R Lawson, Deerslet Farm	1	Pedigree Heifer
PW & DM Swindlehurst, Tranthwaite Hall	2	Pedigree Cows
	1	Pedigree Heifer
J Huddleston, Ravenscar	1	Pedigree Heifer
	2	Pedigree 2 <sup>nd</sup> Calved Cows
GW Whitwell, Lanshaw Farm	1	Heifer
	2	2 <sup>nd</sup> Calved Cows
	1	3 <sup>rd</sup> Calved Cows
Booth Bros, Wigglesworth Hall	1	Pedigree Heifer
	1	Pedigree 2 <sup>nd</sup> Calved Cow
JT & B Fox, Blackwood End	1	Pedigree Heifer
J & H Bland, Ninezergh	3	2 <sup>nd</sup> Calved Cross Bred Cows
DJ Townley, Whinney Carr	4	Heifers
JE Bainbridge, Crossbar View	1	Pedigree Heifer
AV Lord & Co, High Roosebeck	1	Pedigree 2 <sup>nd</sup> Calved Cow
Messers Livesey, Lowick Bridge	2	2 <sup>nd</sup> & 5 <sup>th</sup> Calved Ayrshire Cows
	5	3 <sup>rd</sup> & 4 <sup>th</sup> Calved Friesian Cows
RW Bainbridge & Son, Outfield	2	Pedigree Heifer
RE & EA Barker, Gunnerthwaite	2	Pedigree Heifers
J & R Waller, Hall Beck	1	Pedigree Heifer
<b><u>In Calf Dairy Cattle</u></b>		
A & AM Burrow, Whinyeats	5	Pedigree Heifers due Dec/Jan to Sexed Semen
W & R Mashiter & Son, Harter Beck	7	Friesian Heifers due Jan/Feb to AA

**ENTRIES ACCEPTED & BALLOT DRAWN ON SALE DAY**

# JUDGING SCHEDULE

**JUDGING TO COMMENCE AT 10.00am**

**JUDGES:- Andrew & Daniel Bargh, Skelton**

**Champion l'Ansons & Agri-Plant S.V. LTD**

*The Richard Turner Memorial Challenge Cup*

**Reserve Champion l'Ansons & Agri-Plant S.V. LTD**

*The E S Hartley Clapham Cup*

**Best Newly Calved Cow Graham Fawcett Plant**

**Best Newly Calved Heifer PV Dobson**

*Vale O'Lune Rose Bowl*

**Best B&W Pedigree Cow Flowerfields**

**Best B&W Pedigree Heifer JS Accountancy**

**Best Coloured Cow/Heifer Thornton Breakers**

**Best Animal Bred on Holding Dalehead Vets**

*George Dearden Rose Bowl*

**Best In Calf Cow or Heifer NFU**

*Please note: No animal to be shown in more than one class*

*Maximum of 2 Entries per Vendor per Class*

*All animals put forward for the show to be warranted fully correct*



**l'Anson**  
Quality Feeds

**WEDNESDAY 9<sup>TH</sup> DECEMBER**

**WINTER DAIRY DAY**

**Kindly sponsored by l'Ansons**



**l'Anson**  
Quality Feeds



**AVANT - SALES/HIRE  
MAIN DEALER NORTH YORKSHIRE  
PLANT HIRE  
KOBELCO - SALES/HIRE**

07891306456    robjnr@apsv.co.uk    apsv.co.uk  
Thornton Station Yard, Ingleton, North Yorkshire, LA6 3ET



**I'Anson**  
*Quality Feeds*



**GFP**  
PLANT HIRE & AGRI

Is your Trailer DVSA Ready? + Hydraulic Hoses & Parts  
Trailer Parts, Servicing & Sales

**015242 62888**  
Unit 3 Bentham Industrial Estate  
Bentham, Lancaster, LA2 7NB  
sales@fawcettplant.co.uk



**FLOWERFIELDS**  
5 - 7 Main Street, High Bentham, Lancaster, LA2 7HF  
[www.flowerfieldsbentham.uk](http://www.flowerfieldsbentham.uk)

Delivery of Flowers & Plants locally, nationally and worldwide. Fruit & Vegetables, Cheese and Dairy Products, English Lakes Ice cream. **015242 61904**

Various Post Office services available and also: Gift Wrap & cards, Stationery, Posting essentials, gift vouchers, helium balloons, O.S. maps




**Dalehead**  
Veterinary Group Ltd

**MERRY Christmas**

**Specialist Farm Vets**  
24 Hours A Day  
7 Days A Week

**01729 823538**  
SETTLE | NORTH YORKSHIRE  
Offices at BENTHAM & GISBURN

[www.daleheadvetgroup.co.uk](http://www.daleheadvetgroup.co.uk)



**NFU Mutual**  
Skipton Agency



**P.V. DOBSON**

Tractors, Machinery, Diggers & Pick-Ups  
Call Paul Taylor  
**07921 874840**



# CHRISTMAS DAIRY SHOW

## COVID-19 PROTOCOL

### **\*\*VENDORS \*\***

- a) **Only one vendor may attend per consignment** i.e no extra family members or onlookers
- b) Prior to sale, vendors may wash their cattle and stand by their animal(s) but must respect social distancing
- c) Vendors to follow their stock to the ring and represent their animals in the usual manner
- d) Following the sale of their stock, vendors to leave the sale ring (i.e. not to remain to watch other stock being sold, liaise with buyers)
- e) Luck money etc to be sorted by the auction staff as has recently been the case
- f) Vendors at all times to maintain 2 metre social distancing

Any instructions regarding luck and reserves, if any, along with as much information as possible with regards to your entries, should be given to the auctioneers/clerk in writing prior to the sale.

### **\*\*\*\* PURCHASERS \*\*\*\***

**Please pre-register with the auctioneers or the office (015242 61444)  
your intention to attend.**

You will also be required to register at the sale ring entrance prior to the sale. Pre-sale viewing of stock will be allowed subject to social distancing being maintained. During the sale, please respect social distancing.



**Please wear  
a face mask**

**Please be prepared and bring a facemask.  
They are compulsory throughout  
the Auction Mart at all times.**

*Shows to be held in accordance with Covid 19 guidance as directed by the LAA/ government.*

*One vendor per consignment, no onlookers.*

*Shows subject to change in order to comply with changing protocol.*