



**BENTHAM
AUCTION
MART**

015242 61444/ 61246 (Sale Days)

www.benthamauction.co.uk

info@benthamauction.co.uk

WEEKLY NEWS 18TH DECEMBER 2021



Suffolk Gimmer Lamb from GI Richmond realising £720

AUCTIONEERS:

Stephen J Dennis

Mobile: 07713 075 661

Greg MacDougall

Mobile: 07713 075 664

Will Alexander

Mobile: 07590 876 849

Office 015242 61444 Sale Days 61246

www.benthamauction.co.uk

Tuesday 14th December 2021

STORE LAMBS 2747 Forward

Overall Average £87.69

BREED	TOP	FROM	AV
Beltex	£136.00	GD & J Farming, Bonchester Bridge	£111.00
Blue Texel	£126.00	JA & E Metcalfe, Arncliffe	£67.00
Cheviot	£109.00	Applecross Farming, Lauder	£86.00
Cheviot Mule	£105.00	MJ & C Thornber, West Bradford	£103.00
Dalesbred	£77.00	IR & M Woodhouse, Roeburndale	£49.00
Herdwick	£94.00	J Bownass, Giggleswick	£94.00
Lleyn	£118.50	J Bownass, Giggleswick	£118.50
Lonk	£91.50	Wilsons Green How, Tatham	£87.00
Masham	£88.50	IR & M Woodhouse, Roeburndale	£88.00
Mule	£85.00	CH Allen & Son, Hawes	£85.00
Suffolk	£118.00	RM Wilson, Horton in Ribblesdale	£89.00
Swale	£102.00	DS Gregory, Glossop	£52.00
Texel	£139.00	S & FM Heald, Ingleton	£108.00
Welsh	£87.00	Matinley Farms, Selkirk	£83.00

Auctioneer's Report (Greg MacDougall): Just short of 3000 lambs forward. Some real tail end and weathered lambs in the entry but considering the time of year, there were still some fantastic runs of lambs on offer. The highlight of the sale was undoubtedly a run of 400 Beltex and Texel lambs from GD & J Farming, Wauchope topping at £136 and averaging £111.47, a real pleasure to sell. Stronger and best smart lambs £115-£135 all sale long with S & FM Heald topping the sale at £139. Medium term lambs £100+ with best long keep lambs £90+. Lambs from Matinley Farms, Selkirk selling smaller Suffolks to £98. Smaller weathered lambs including cross bred types £50-£60 in general. Cheviot lambs £80-£90 for smaller sorts with a few strong pens £100+ topping at £109. A mixed show of Mules, plenty £80+ with a cut above often £90+ topping at £111.50. Best meaty Horned lambs £70-£80 with some strong Horned rams to £102 from DS Gregory. Medium sorts £50+ with small types £30-£40, some at realisation. A pen of Herdwicks from J Bownass, Giggleswick sold to £94.

****No Sale Tuesday 28th December****

NEXT SALE IS TUESDAY 11TH JANUARY

Wednesday 15th December

Rearing Calves

93 Forward

Breed	Top	From	Av
AA Bulls	£370	M & D Stable, Ulverston	£244
AA Hfrs	£220	SPA Rushton, Wigglesworth	£170
BrB Bulls	£420	D & D Hodgson, Tatham	£335
BrB Hfrs	£365	SPA Rushton, Wigglesworth	£261
Fleckvieh Bulls	£380	HH & MG Robinson & Son, Slaidburn	£380
Hereford Bulls	£225	JA & S Towers, Farleton	£225
Hereford Hfrs	£235	A & ED Booth, Giggleswick	£149
B + W	£145	M & D Stable, Ulverston	£68

Auctioneer's Report (Will Alexander): More native calves on offer, especially bulls. Weanable milk calves from The Cassons of Cote Farm, sold to £272, whilst stronger sorts from Tom Stable, John Lawson & The Duncans were £275-£290. The strongest coming from M&D Stable at £370. Heifers either side of £200, with a few smalls less. A nice group of Hereford Heifers from A & ED Booth peaked at £235, with bulls topping at £225 from Brades Farm, Farleton. Blue bulls in demand, the best of Ian Hodgson's pair topped the day at £420, with others often £400+, next draw in the £300s. As a rule, heifers £270-£315, with the best coming from SPA Rushton at £365. Black and whites saw the darker and fleshier calves commanding a premium, £110+ peaking at £145. Mediums £80-90 with the smalls and lightweights at realisation.

Sale of calves will be as normal on

Wednesday 22nd December

Please note, there will be NO sale on

Wednesday 29th December (sheep day only)

Wednesday 15th December

CAST EWES

2224 FORWARD

Breed	Top	From
Beltex	£148.00	NL & CJ Brown, Claughton
BFL	£175.50	EW & JR Parkinson, Dunsop Bridge
Cheviot	£135.50	AR Beckerton, Tatham
Hampshire	£112.00	J Coatsworth, Long Preston
Lleyn	£138.50	H & M Dugdale & Son, Stackhouse
Lonk	£117.00	R Bryan, Warrington
Masham	£120.50	AR Beckerton, Tatham
Mule	£137.00	H Huddleston & Son, Arkholme
Romney	£122.50	F Machin & Sons, Bransby
Rough	£93.50	A & H Watson, Kirkby Lonsdale
SBF	£88.50	T Foster, Tarleton
Suffolk	£169.00	E & M Townley, Clapham
Swale	£98.50	D & V Lawson, Bentham
Texel	£210.00	AD Lawson, Bentham
Goats	£110.50	P Wilson, Newbiggin on Lune
HRD Tups	£98.50	A & CT Scott, Slaidburn
CTL Tups	£200.00	AD Lawson, Bentham

Auctioneer's Report (Greg MacDougall): An increased entry of cast sheep forward to the usual ringside of 14 active buyers. A very mixed show of quality with a large number of hill, plain and lightweight ewes in the entry with trade slightly easier than recent weeks, a similar story country wide. Heavy and best bred ewes in strong demand with trade very strong and easily maintaining recent high rates. Topping the sale at £210 twice was Andrew Lawson, Oak Bank, R & E Butterfield and J Garth & Son close behind at £200. Best ewes in general £150-£180 with heavies £130-£180. Good selling ewes £110-£120 with smaller sorts i.e some Cheviots and grazing types £70-£90. Heavier Mules £115-£130 with some super heavy types £130+ topping at £137. Small fleshy types £95-£110 with lean types in the £80s. Strongest of the Horned ewes £80-£90 with D & V Lawson topping with Swales at £98.50. Mediums £65-£75 with plain £30-£50. A pen of Lonks from R Bryan, Warrington sold to £117. Cast rams selling at extreme rates. Best £160-£200 with well worked lads £100-£130, Hill rams £78-£98. Goats topped at £110.50 from P Wilson, Newbiggin on Lune. Trade expected to remain similar over the festive period.

PRIME LAMBS 3365 Forward
Overall Av 275.2p SQQ 276.3p

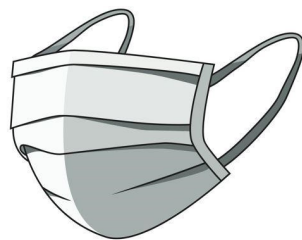
BREED	TOP	FROM	AV
Top Price Per Head (Over 36kg)			
Beltex	£189.00	RF Towers, Wray	£160.00
Blue Texel	£165.00	P Holgate, Wigglesworth	£146.00
Charollais	£133.50	Mrs R Capstick, Horton in Ribblesdale	£117.00
Cheviot	£135.50	Trustees of SP Pease, Kirkby Lonsdale	£114.00
Dalesbred	£105.50	R & A Wallbank, Slaidburn	£102.00
Dorset	£118.50	GM & AM Wilson, Cartmel	£118.50
Gritstone	£134.50	F Walter & Son, Retford	£110.00
Herdwick	£90.00	B Dickinson & Co, Kendal	£90.00
Masham	£127.50	T & D Wright, Roeburndale	£116.00
Mule	£125.00	AA & HM Capstick & Sons, Howgill	£109.00
SBF	£116.50	AA & HM Capstick & Sons, Howgill	£103.00
Spotted	£152.50	RJ Heigh, Bentham	£135.00
Suffolk	£145.00	SW & K Metcalfe, Whittington	£121.00
Swale	£121.50	AA & HM Capstick & Sons, Howgill	£90.00
Texel	£185.00	JM Andrews, Easingwold	£125.00
Top Price Per Kilo (Over 36kg)			
Beltex	434.1p	K & A & E Avis, Goole	369.4p
Blue Texel	390.0p	J Garth & Son, Clapham	341.6p
Charollais	292.2p	S & FM Heald, Ingleton	271.0p
Cheviot	330.5p	Trustees of SP Pease, Kirkby Lonsdale	267.2p
Dalesbred	245.3p	R & A Wallbank, Slaidburn	238.8p
Dorset	252.1p	GM & AM Wilson, Cartmel	252.1p
Gritstone	277.8p	F Walter & Son, Retford	270.7p
Herdwick	250.0p	B Dickinson & Co, Kendal	250.0p
Masham	252.1p	SJ Crane, Ribchester	245.7p
Mule	265.9p	Foxhill Farms, Doncaster	253.8p
SBF	280.3p	Foxhill Farms, Doncaster	267.8p
Spotted	293.3p	RJ Heigh, Bentham	276.1p
Suffolk	318.9p	JK & CA Bretherton, Stockclough	259.8p
Swale	248.0p	AA & HM Capstick & Sons, Howgill	232.9p
Texel	418.3p	NL & CJ Brown, Cloughton	283.8p
Top Price Per Head (Under 36kg)			
Beltex	£110.00	K & A & E Avis, Goole	£102.00
Dalesbred	£76.50	JM & JJ Dawson, Littledale	£62.00
Lonk	£77.50	Hey & Son, Quernmore	£77.50
Mule	£84.00	D Gardner, Brookhouse	£73.00
Swale	£83.50	A & RA Middleton, Cowan Bridge	£74.00
Texel	£103.00	R & CR Nowell, Clapham	£87.00
Top Price Per Kilo (Under 36kg)			
Beltex	333.3p	K & A & E Avis, Goole	313.8p
Dalesbred	233.9p	Messrs Coates, Settle	213.0p
Lonk	250.0p	Hey & Son, Quernmore	250.0p
Mule	240.0p	D Gardner, Brookhouse	223.7p
Swale	245.6p	A & RA Middleton, Cowan Bridge	224.7p
Texel	294.3p	R & CR Nowell, Clapham	264.4p

PRIME LAMBS

Auctioneer's Report (Greg MacDougall): A nicer trade than was perhaps expected with some steadier trades reported in some centres. The usual show on offer with something to suit all requirements. Some great quality lambs with both handy weight and heavy butcher types in very high demand and Bentham easily competing when it comes to high prices. Topping the evening's sale were four superb Beltex lambs from RF Towers, Curwen Hill realising £189 and weighing 44kg. Topping per kilo at 434.2p was K & A & E Avis, Goole with some 41kg Beltex lambs, the same home selling some heavies to £188. The best from JM Andrews, Thirsk also sold to £188 with others to £185 while Anne Cranston of Selkirk sold her best to £182 and £180. The best pence per kilo saw RF towers to 429.6p, NL & CJ Brown 418.3p, J Garth & Son 414p, 413p. A superb run of 108 mainly Beltex types from Messrs Sayer, Hackthorpe topped at £169 for a pen of 9 with other pens (not singles!!) at £160-£167 overall averaging £154.30. Best bred sorts in general 330-380p with a nice commercial lamb around 300p. Plainer sorts 270-280p. Best heavies £160-£180 with commercials £140-£150. Those lambs weighing 45-50kg £125-£135. Over 1000 Mule and hill bred lambs forward. Heavier Mules in the £120 with handier weights 255-265p. Swales topped at £121.50 from AA & HM Capstick, Howgill with per kilo often 235-248p. Some nice SBF forward saw trade in general 268-278p topping at 280.3p from Foxhill Farms or £116.50. with trade soon coming to an end for light weights, those who took advantage would be happy with their returns, Best Continentals to 333p with hill lambs to 258.6p for Blackies.

BELLY CLIPPING

Some buyers now require lambs to be belly clipped and crutched. A cost of 50p/head will be charged for the Auction service unless lambs have already been clipped



It is recommended that you wear a face covering while at the auction

Thursday 16th December

ELITE BREEDING SALE 60 Forward

BREED	TOP	FROM	AV
Beltex Lamb	£160	MR & JE Davis, Eldroth	£160
Beltex IL Shearling	£400	MR & JE Davis, Eldroth	£348
Beltex IL Ewe	£320	MR & JE Davis, Eldroth	£320
Blue Texel Lamb	£350	E Mckechnie, Wigglesworth	£350
Blue Texel IL Shearling	£520	E Mckechnie, Wigglesworth	£520
Blue Texel IL Ewe	£550	GE Jackson, Bentham	£460
Charollais IL Shearling	£480	RJ & J Towers, Ingleton	£426
Charollais IL Ewe	£400	RJ & J Towers, Ingleton	£387
Charollais x Beltex IL Shearling	£480	MR & JE Davis, Eldroth	£420
Dutch Texel Lamb	£200	MR & JE Davis, Eldroth	£190
Dutch Texel IL Shearling	£320	MR & JE Davis, Eldroth	£245
Dutch Spotted x IL Ewe	£580	GE Jackson, Bentham	£483
Suffolk Lamb	£720	GI Richmond, Goosnargh	£455
Suffolk IL Shearling	£425	GI Richmond, Goosnargh	£425
Texel Lamb	£500	SM Ireton, Westfields	£267
Texel IL Shearling	£800	Procters Farm, Wray	£633
Texel x Beltex IL Shearling	£350	MR & JE Davis, Eldroth	£300
Zwartbles IL Shearling	£320	RJ Heigh, Bentham	£273

Auctioneer's Report (Greg MacDougall): The fourth Elite Breeding Sheep Sale at Bentham Auction was full of Christmas cheer with a virtual clearance achieved. A packed ringside of buyers in attendance saw sheep heading to new homes in Cheshire, Derbyshire, Lincoln as well as plenty staying local looking like early Christmas presents! First in the ring was some Zwartbles shearlings from RJ Heigh in lamb to the Dutch Spotted with this consignment topping at £320. GE Jackson's Dutch Spotted and Blue Texel sheep were met with keen bidding topping at £580 with an in lamb Dutch Spotted x. Next in was RJ & J Towers' annual consignment of Charollais shearlings and young ewes in lamb to the Beltex topping at £480 to average £411. Texel shearlings from Procters Farm Ltd led the way topping the night's sale at £800 in lamb to Sportsmans Double Diamond— she was purchased by local breeder Jack Foster. Suffolk shearlings to £425 with lambs to £720, all from GI Richmond, Goosnargh. M Davis enjoyed a brisk trade with a total clearance achieved topping at £480 for a Charollais x Beltex. A nice pen of Texel gimmer lambs from Sandra Ireton, Westfields sold to £500. The sale concluded with some Blue Texels from the Silver Birch Flock. A shearling sold to £520 with lambs to £350. Overall, a successful evening and a sale for the future. Merry Christmas all!!



Tuesday 21st December

10.30am Feeding & Cast Cows & OTM Cattle

11.30 Christmas Show & Sale Of

500 STIRKS & YOUNG STORES

Inc. Annual Consignments of Quality Suckler Bred Blks/ Hfrs from
Fishwick Farms (15), Frankland Farms (25),
E & M Townley (12), D Prickett (8), M Taylor & Son (12),
JM & JE Beresford (6). *Judging at 10.30am*



Wednesday 22nd December

FORTNIGHTLY SALE OF DAIRY CATTLE

Wednesday 29th December

No Sale of Calves this Day

3.00pm 2000 Cast Ewes.. 3500 Prime Lambs

YFC Singles Night Prizes for Best Single Prime Hogg (Lowland & Hill Breeds)
& Best Presented Prime Hogg & Vendor shown by a Young Farmer (under 27yo)

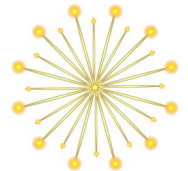
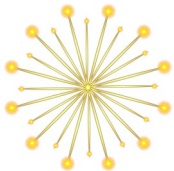


Tuesday 4th January

Feeding & Cast Cows & OTM Cattle

Monthly Sale Of Suckler Breeding Cattle

NEW YEAR SALE OF STORE CATTLE



Thursday 23rd December at 6.00pm



CHRISTMAS DRESSED

POULTRY SALE



150 Turkeys, Geese, Ducks, Chickens etc.